

Installation Instructions

WARNING



Risk of Fire, Electrical Shock, Cuts or other Casualty Hazards- Installation and maintenance of this product must be performed by a qualified electrician. This product must be installed in accordance with the applicable installation code by a person familiar with the construction and operation of the product and hazards involved.



Risk of Fire and Electric Shock- Make certain power is OFF before starting installation or attempting any maintenance. Disconnect power at fuse or circuit breaker.



Risk of Fire- Refer to product label for specific minimum supply conductor requirements.

Risk of Burn- Disconnect power and allow fixture to cool before handling or servicing.



Risk of Personal Injury- Fixture may become damaged and/or unstable if not installed properly.

Failure to comply with these instructions may result in death, serious bodily injury and property damage.

Note: These instructions do not claim to cover all details or variations in the equipment, procedure, or process described, nor to provide directions for meeting every possible contingency during installation, operation or maintenance. When additional information is desired to satisfy a problem not covered sufficiently for user's purpose, please contact your nearest representative.

Note: Specifications and dimensions subject to change without notice.

DISCLAIMER OF LIABILITY: Cooper Lighting Solutions assumes no liability for damages or losses of any kind that may arise from the improper, careless, or negligent installation, handling or use of this product.

NOTICE: Green ground screw provided in proper location. Do not relocate.

ATTENTION Receiving Department: Note actual fixture description of any shortage or noticeable damage on delivery receipt. File claim for common carrier (LTL) directly with carrier. Claims for concealed damage must be filed within 15 days of delivery. All damaged material, complete with original packing must be retained.

Safety: This fixture must be wired in accordance with the National Electrical Code and applicable local codes and ordinances. Proper grounding is required to insure personal safety. Carefully observe grounding procedure under installation section.

Please read this manual carefully before using the product.

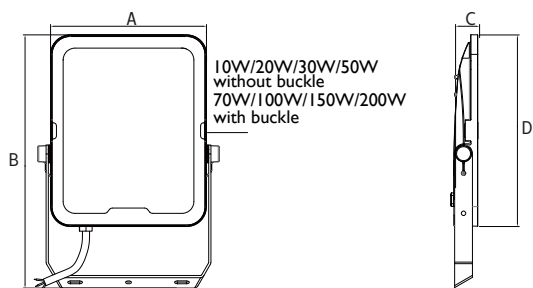
1. Do not switch on before complete installation.
2. The luminaire shall be installed by a qualified electrician and wired in accordance with the latest IEE electrical regulations or the national requirements.
3. The external flexible cable or cord of this luminaire cannot be replaced; if the cord is damaged, the luminaire shall be destroyed.
4. The light source of this luminaire is not replaceable; when the light source reaches its end of life the whole luminaire shall be replaced.
5. The luminaire is complied with IEC 60598.
6. Luminaire must not be used or stored in corrosive environment where hazardous materials such as Sulphur, Chlorine, phthalates, etc, are present.
7. To reduce the risk of strangulation the flexible wiring connected to this luminaire shall be effectively fixed to the wall if the wiring is within arm's reach.

Type	CCT (K)	Power (W)	Energy	LEDs	Lumen Output (lm)	Dimension AxBxCxD (mm)	Eng: Projected Area (m ²)	Kg	Voltage	Frequency	Surge rating
Revolve120 FLD 12S/WW_NW_CW 10W SYM	3000	10	F	30	1100	70x130x31x90	0.005	0.225	220-240V~	50/60Hz	2KV/2KV
	4200*				1200						
	6500				2200						
Revolve120 FLD 24S/WW_NW_CW 20W SYM	3000	20	F	60	2400	82x149x31x109	0.008	0.265			
	4200*				3300						
	6500				3600						
Revolve120 FLD 36S/WW_NW_CW 30W SYM	3000	30	F	90	3600	117x182x29x145	0.017	0.525			
	4200*				5500						
	6500				6000						
Revolve120 FLD 60S/WW_NW_CW 50W SYM	3000	50	F	150	7700	150x232x30x185	0.028	0.785			
	4200*				7700						
	6500				8400						
Revolve120 FLD 84S/WW_NW_CW 70W SYM	3000	70	F	210	11000	175x286x33x215	0.038	1.245			
	4200*				12000						
	6500				16500						
Revolve120 FLD 120S/WW_NW_CW 100W SYM	3000	100	F	300	16500	185x304x36x244	0.045	1.785			
	4200*				18000						
	6500				22000						
Revolve120 FLD 180S/WW_NW_CW 150W SYM	3000	150	F	450	22000	242x401x37x320	0.077	2.885			
	4200*				24000						
	6500										
Revolve120 FLD 240S/WW_NW_CW 200W SYM	3000	200	F	600	24000	296x474x39x380	0.112	4.115			
	4200*										
	6500										

*default setting 3000K, 4200K, 6500K

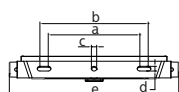
Fasten the bolt
Torque : Nm

	10W	20W	30W	50W	70W	100W	150W	200W
Torque(Nm)	2	2	2	8	8	15	25	25

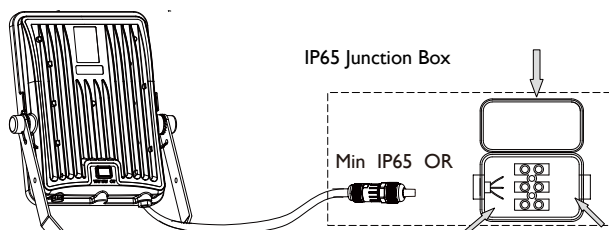


10W/20W/30W/50W without buckle
70W/100W/150W/200W with buckle

The exposed wire length:10/20/30/50W 1000mm 70/100/150/200W 1000mm



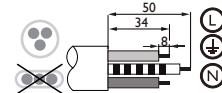
Type	10W	20W	30W	50W	70W	100W	150W	200W
a (mm)	41	50	70	90	110	110	136	210
b (mm)	51	60	85	110	130	130	166	240
c (mm)	∅4.2	∅4.2	∅4.5	∅6.5	∅6.5	∅8.5	∅10.5	∅10.5
d (mm)	4.2	4.2	4.5	6.5	6.5	8.5	10.5	10.5
e (mm)	85	97	133	173	203	220	282	336



IP65 Junction Box

Min IP65 OR

H05RN-F 3x1.0 mm²
60245IEC57
N: Blue
L : Brown
GND:Yellow-Green



The terminal block should be complying with EN60998-2-1/EN60998-2-2

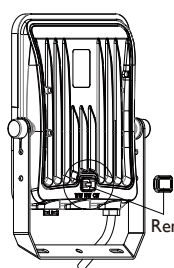
- Always use IP65 or higher IP rated junction box/connector for wiring connection.
- The Luminaire should never be used in submerged wet conditions e.g. under water, soil, snow etc.
- The wiring connection should also never be used in submerged wet conditions e.g. water, soil, snow etc. OR use IP68 junction box.
- The warranty is void, in case any of the instructions / guidelines are not followed as per given mounting instruction.
- This product is not supplied with any junction box / connector.
- For further clarification, please contact the manufacturer.

Type	Run Current (A) (@230V)	Start (Inrush) Current(A) / Ipeak (A)	Start Current Duration (μs) / T(@50% of Ipeak) (μs)	* Touch current or protective conductor current (mA)	Maximum Number of Luminaire on MCB I6A Type B (pcs)	Maximum Number of Luminaire on MCB I6A Type C (pcs)
REVOLVE120 FLD 10W	0.044	0.78	6.48	< 3.5	218	254
REVOLVE120 FLD 20W	0.088	1.1	7.4	< 3.5	109	127
REVOLVE120 FLD 30W	0.13	1.22	7.2	< 3.5	73	85
REVOLVE120 FLD 50W	0.22	1.68	8.2	< 3.5	44	51
REVOLVE120 FLD 70W	0.305	3.64	22.2	< 3.5	31	36
REVOLVE120 FLD 100W	0.44	3.84	24.4	< 3.5	22	25
REVOLVE120 FLD 150W	0.66	4.16	26.4	< 3.5	15	17
REVOLVE120 FLD 200W	0.88	4.38	28.4	< 3.5	11	13

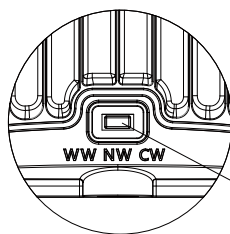
The leakage current *(touch current or protective conductor current) of electrical circuit may be greatly dependent upon electrical supply cables used such as its rating and length, proper connection of electrical supply cables to luminaires and wiring connection topology of luminaires to the supply electrical circuit amongst other site conditions.

* In some cases referred to as Earth Leakage Current.

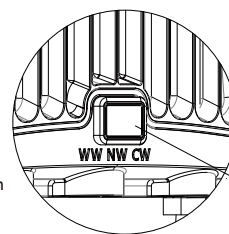
Multi Color switch: set your color temperature 3000K, 4200K (=default) or 6500K



Remove CCT cover



CCT Selectable Switch
Left (WW): 3000K
Middle (NW): 4200K
Right (CW): 6500K



Cover the CCT switch
Please install the switch cover tightly to prevent it from falling off and entering water

