

Installation Instructions

WARNING



Risk of Fire, Electrical Shock, Cuts or other Casualty Hazards- Installation and maintenance of this product must be performed by a qualified electrician. This product must be installed in accordance with the applicable installation code by a person familiar with the construction and operation of the product and hazards involved.



Risk of Fire and Electric Shock- Make certain power is OFF before starting installation or attempting any maintenance. Disconnect power at fuse or circuit breaker.



Risk of Fire- Refer to product label for specific minimum supply conductor requirements.

Risk of Burn- Disconnect power and allow fixture to cool before handling or servicing.



Risk of Personal Injury- Fixture may become damaged and/or unstable if not installed properly.

Failure to comply with these instructions may result in death, serious bodily injury and property damage.

Note: These instructions do not claim to cover all details or variations in the equipment, procedure, or process described, nor to provide directions for meeting every possible contingency during installation, operation or maintenance. When additional information is desired to satisfy a problem not covered sufficiently for user's purpose, please contact your nearest representative.


Note: Specifications and dimensions subject to change without notice.

DISCLAIMER OF LIABILITY: Cooper Lighting Solutions assumes no liability for damages or losses of any kind that may arise from the improper, careless, or negligent installation, handling or use of this product.

NOTICE: Green ground screw provided in proper location. Do not relocate.

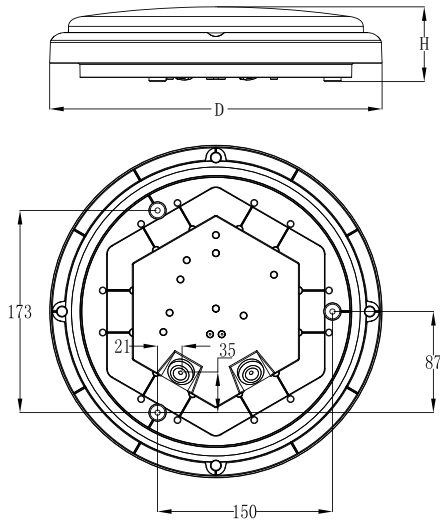
ATTENTION Receiving Department: Note actual fixture description of any shortage or noticeable damage on delivery receipt. File claim for common carrier (LTL) directly with carrier. Claims for concealed damage must be filed within 15 days of delivery. All damaged material, complete with original packing must be retained.

Safety: This fixture must be wired in accordance with the National Electrical Code and applicable local codes and ordinances. Proper grounding is required to insure personal safety. Carefully observe grounding procedure under installation section.

Type Number	Power	LEDs	Voltage	Frequency	CCT	
REVOLVE120 BHD 11S/830 WH	11W	18	AC 220-240V	50/60Hz	3000K	0.58
REVOLVE120 BHD 11S/840 WH					4000K	
REVOLVE120 BHD 17S/830 WH	17W	24			3000K	
REVOLVE120 BHD 17S/840 WH					4000K	
REVOLVE120 BHD 17S/830 WH MDU	19W	24			3000K	0.61
REVOLVE120 BHD 17S/840 WH MDU					4000K	

200*256MM

Dimensions

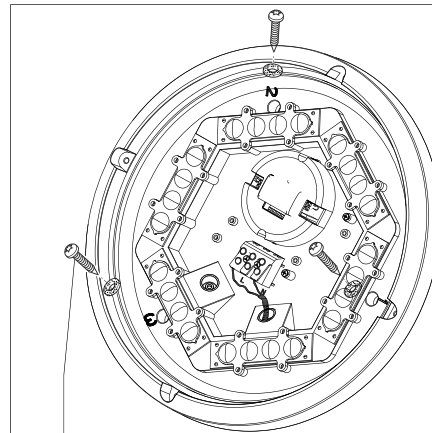
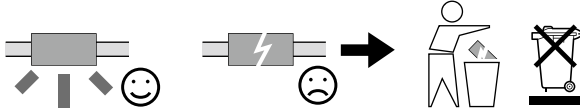


Model	D	H	Unit
REVOLVE120 BHD 11S/830 WH	285	64	mm
REVOLVE120 BHD 11S/840 WH			
REVOLVE120 BHD 17S/830 WH	285	64	mm
REVOLVE120 BHD 17S/840 WH			
REVOLVE120 BHD 17S/830 PSU WH	285	64	mm
REVOLVE120 BHD 17S/840 PSU WH			

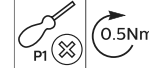


ATTENTION
OBSERVE PRECAUTIONS
FOR HANDLING
ELECTROSTATIC
SENSITIVE
DEVICES

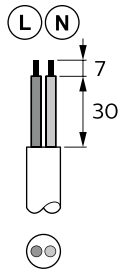
- The luminaire shall be installed by a qualified electrician and wired in accordance with the latest IEE electrical regulations or the national requirements.
- This luminaire is not suitable for use as emergency lighting. The light source contained in this luminaire shall only be replaced by the manufacturer or his service agent or a similar qualified person.
- For use in environments where an accumulation of conductive dust on the luminaire may be expected.
- For outdoor operation at a building: only when all its cables run indoor, with a maximum distance of 10 meter



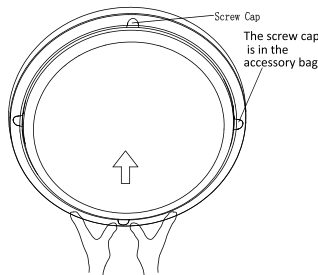
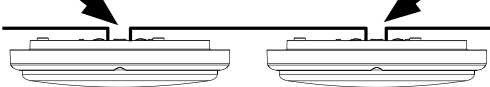
3X
ST3.9 x 25



Min. H05RN-F 2x1,00 mm²
Max. H05RN-F 2x1,50 mm²
Ø6-Ø10 mm



Max. 10 luminaires.



Mount in place flat to the side plane of the base, not higher than the plane as shown in the view

ST3.9X12



Notes:

1. The Ledinaire Wall-mounted needs to be installed side-by-side in the same direction. The distance between each of the luminaires should be kept at least 3m to avoid mutual interference.
2. Please pay attention to the installation environment:
 - 2.1. Avoid high-density objects such as: metal, glass, concrete walls, etc., within the sensor detection area.
 - 2.2. Avoid moving signals within the sensor detection area such as: fan, DC motor, sewer pipe, air outlet, heavy rainfall, motion behind a thin wall etc. This to avoid false triggers of the sensor.
 - 2.3. Avoid shock & vibration in the environment of the application.
3. In order to reach the common sensor distance the object move speed should be less than 1m/S . If an object moves with speed higher than 1m/s the detection distance will decrease.
4. It is advised not to install a luminaire on a wooden surface. In case it must be installed on a wooden surface, the wood thickness must be more than 15cm.
5. To avoid smaller detection range or abnormal operation, the Ledinaire Wall-mounted should not be installed in close distance to large areas of metal and glass (separation distance at least 1 m).

Cooper Lighting Solutions

